

# MetaCenter SX

**Sullivan-Palatek®**

Identification:	MetaCenter SX
Part number:	Refer to Product guide / price list for specific part number or contact dealer
Product Family:	MetaCenter
Function:	Central management control & monitoring of air / gas compressors Optional integrated control / monitoring of ancillary compressed air equipment
Definition:	Narrow pressure band controller with enhanced software features & functions
Capacity:	2 - 12 air / gas compressors & MetaCenter ancillary product control / monitoring via optional MetaCenter I/O & sensor options
Compressor connectivity:	SX Terminal board & dedicated compressor interface or via <b>Air<sup>TR485</sup></b> communication protocol <sup>1</sup>
Supported protocol:	<b>Air<sup>TR485</sup></b> & Modbus RTU via dedicated network gateway
Software:	Pre-programmed application software, configurable via password protected operator interface

**Product overview:**

As demand for compressed air fluctuates and as system pressure decays or increases in response to that demand, MetaCenter compressor management systems ensure that site wide compressors and ancillary compressed air equipment are harnessed as 1 to obtain an equilibrium where efficiency, equipment utilisation and system pressure are in perfect balance. In unmanaged compressed air systems that equilibrium represents a significant energy & cost saving opportunity.

MetaCenter SX is a specialised supervisory control product designed to provide energy efficient optimised narrow pressure and priority management control of up to 12 air / gas compressors operating in a common compressed air / gas system.








MetaCenter SX's general operating mode can be modified via a number of adjustable parameters enabling its control strategy to align with / optimise available compressed air equipment and site specific installation characteristics.



**Features & Functions:**

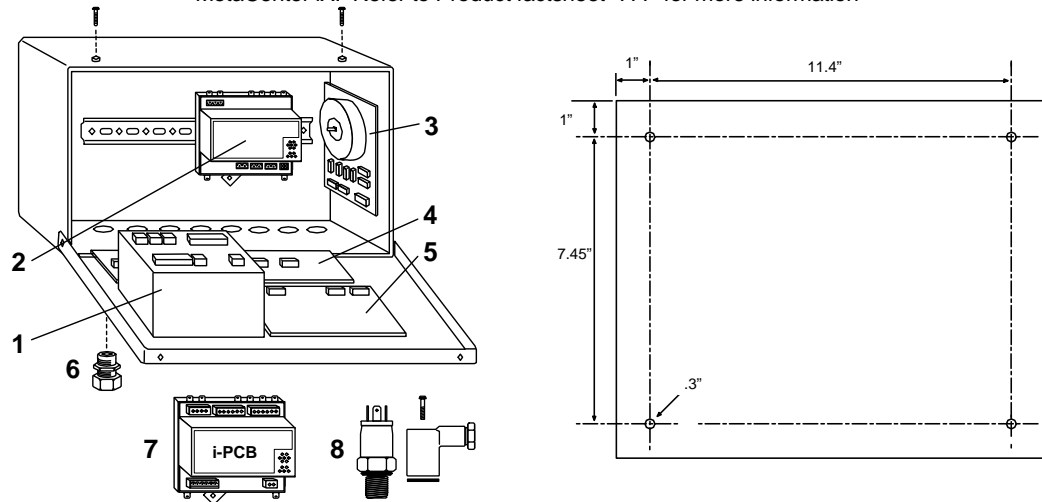
The primary function of the MetaCenter SX pressure control strategy is to maintain system pressure between the 'High Pressure' set point & the 'Low Pressure' set point in conjunction with targeting energy efficiency through optimal compressor utilisation. The SX calculates a 'Target' pressure level which is used as the nominal 'target' pressure level for the system. Rate of change in pressure, is largely determined by system volume and the scale, and/or abruptness, of air demand fluctuations; these characteristics will differ from installation to installation. To accommodate for variations in installation characteristics the 'Tolerance' pressure level (TO) and an influence on the dynamic reaction time (or 'Damping') of the SX is adjustable.

**Key product features:**

- |   |   |   |   |
|---|---|---|---|
|  | One touch & single pressure band technology narrowing site wide pressure to a minimum of 2.9 psi (0.2bar)                       |  | Intelligent pre – Fill, set required system pressure, when you want it and let MetaCenter do the rest   |
|  | Table Technology that allows configuration and inter-utilisation of up to 4 separate compressor management & control strategies |  | Energy Control Mode, our most advanced control algorithm for efficient compressor system management & control.  |
|  | Real time clock & pressure schedule adding necessary fine tuning and pressure optimisation capabilities                         |  | Multiple VFD control & optimisation technology, as the use of variable speed drive increases its increasingly important to question what binds the equipment together ? |
|  | Remote I/O expansion. Add distributed intelligence to control / monitor equipment, sensors and automate functions               |   | Our advanced software algorithms ensure VFD load optimisation is assured  |

Product Family: MetaCenter  
 Function: Central management control & monitoring of air / gas compressors  
 Optional integrated control / monitoring of ancillary compressed air equipment  
 Definition: Narrow pressure band controller with enhanced software features & functions  
 Capacity: 2 - 12 air / gas compressors & MetaCenter ancillary product control / monitoring via optional MetaCenter I/O & sensor options  
 Pressure ref: 4 – 20mA  
 Pressure scale: Configurable to 870 psi (600bar)  
 Processor: 16bit ST10 Micro-processor  
 Op. interface: 128 x 64 graphical back lit LCD plus SX & individual compressor status indication panel  
 Real time clock: internal real time clock  
 Software: Pre-programmed application software, configurable via password protected operator interface  
 Protocol: **Airbus** RS485™ & Modbus RTU via dedicated network gateway  
 Modes of control: Fixed cascade mode, ☑ Equal hours run, ☑ Timer rotation (FILO), ☑ Energy control mode  
 Tables: 4 operating parameter tables  
 Software features: ☑ Intelligent pre-fill, ☑ Sequence rotation, ☑ Priority settings, ☑ Pressure schedule  
 Auxiliary output: 1 x Menu selectable single function relay output <sup>2</sup> (<sup>2</sup> see function list below)  
 Auxiliary input: 1 x Menu selectable single function digital input <sup>3</sup> (<sup>3</sup> see function list below)  
 Supply / Power: 230Vac +/- 10%, 115Vac +/- 10%, 100VA  
 Enclosure rating: IP54 / NEMA12  
 Dimensions: Height: 9.45" (241mm) x Width: 13.4" (340mm) x Depth: 6" (152mm)  
 Access: Front, lockable, hinged access panel  
 Cable entry: Bottom, gland cable entry system  
 Weight: 16.5lbs (7.5kg)  
 Mounting: Wall, 4 x screw fixing  
 Temperature: Min 32°F (0°C), Max 115°F (+46°C)  
 Humidity: 95% RH non-condensing  
 Approvals: CE, UL, cUL

<sup>1</sup> The MetaCenter SX terminal board is capable of accepting signals from up to 4 air / gas compressors. Additional terminal capacity (max = 12) can be added by selecting MetaCenter iX. Refer to Product factsheet 'T77' for more information



**Item - description**

- 1 Unit, Controller
- 2 Unit, XPM – PSU24
- 3 Unit, XPM – TAC24
- 4 PCB, Terminal
- 5 Unit, XPM – LED24
- 6 Gland, Set – PG13.5
- 7 Module, iPCB\*
- 8 Sensor, pressure\*

\* Supplied as part of SX kit only

**<sup>3</sup> Auxiliary digital input – Function list:**

- Override - table 1
- Override - table 2
- Override - table 3
- Override - table 4
- Override – standby
- Remote start / stop
- Remote alarm (always active)
- Remote alarm
- (active when MetaCenter running only)
- Remote trip (always active)
- Remote trip
- (active when MetaCenter running only)

**<sup>2</sup> Auxiliary relay output – Function list:**

- Any fault (Alarm, Trip, unavailable condition)
- Any trip (trip, unavailable condition)
- Compressor fault (Alarm, Trip, unavailable)
- Compressor alarm (Alarm)
- Compressor trip (Trip, unavailable)
- System fault
- System On
- System active
- System pressure control active
- Low pressure alarm
- High pressure alarm
- Pressure control override

